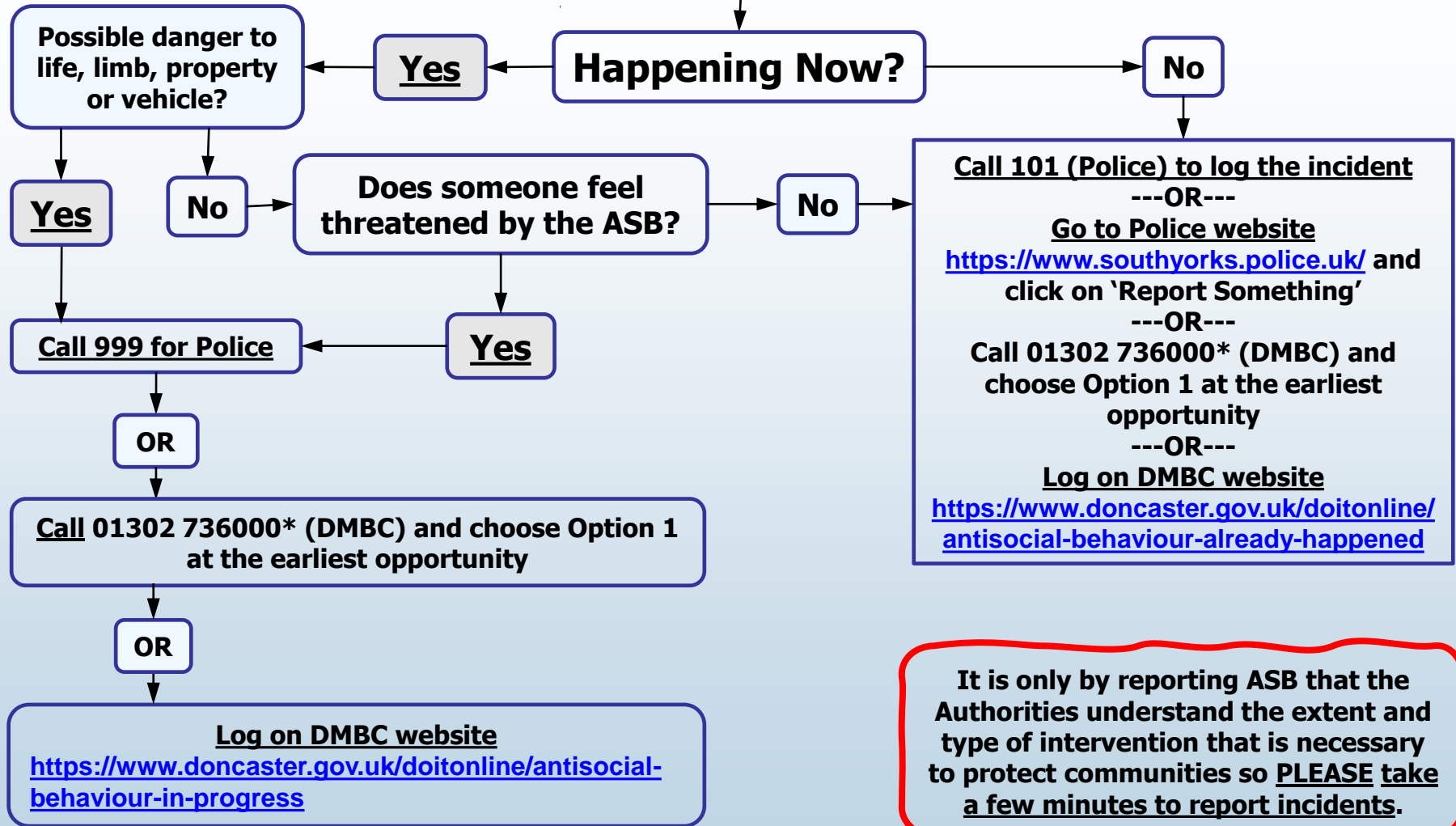


# Recommended Guide to Reporting Antisocial Behaviour



**It is only by reporting ASB that the Authorities understand the extent and type of intervention that is necessary to protect communities so PLEASE take a few minutes to report incidents.**

**\* If you ring DMBC out of office hours you will be given another number to call**

Issued on behalf of Cantley with Branton Parish Council and Kilham Hall Management Committee